



COLLABORATIVE AOTEAROA NEWSLETTER

April 2022



COLLABORATIVE
AOTEAROA



Collaborative Aotearoa wishes to share highlights relating to its Localities and Collective Impact mahi. Responding to the health reforms has been a priority, as well as continuing to strongly support Health Care Home and Digital Health.

Our reflective practice has led to creating short videos with the Tamarack Institute to seek a peer review of our Collective Action with Communities approach. Included in the kōrero is the role of Collaborative Aotearoa as an emerging field catalyst to support system change that ensures whānau flourish.

Our recent Symposium included exciting shared learnings from across our network, with a focus on lived experience, collaborative governance and community engagement.

We warmly invite you to read on and learn more.

Amarjit

Centering equity in Collective Impact - Invite


21st April 2022 (9am - 10am) [Register here](#) [Webinar Flyer](#)

We are pleased to be able to introduce you to Paul Schmitz, a leading world expert in Collective Impact. Paul will be speaking on “Centring equity in Collective Impact” and this will be essential in supporting localities mahi.

This session will be recorded and shared with our networks.

Paul, as part of the Collective Impact Forum has supported our mahi for some time along with the Tamarack Institute. Early last year Paul facilitated our Collective impact Webinar series which can be found www.collab.org.nz





What is Telehealth?

Telehealth. Good for you.
Good for your patients.

Let's get started!

Telehealth Online Learning

Collaborative Aotearoa is proud to share the online learning modules to support the uptake of telehealth . The modules are included as part of the Ministry of Health's online learning platform.

Modules cover:

- What is Telehealth? (5 mins)
- Getting ready for Telehealth (30 mins)
- The Telehealth Consultation (30 mins)
- Post Learning Reflection (10 mins)

You can find the online modules [here](#)

Localities & Collective Impact - tailored to Aotearoa

Collaborative Aotearoa strongly believes that collective impact as an approach is able to support localities as a core part of the health reforms. Specifically, this tailored approach has the ability to support the journey of localities in a way that requires reflection practice that promotes trust and connectedness from the outset. A collective impact approach considers preconditions that include influential champions, a burning platform, sufficient resources and a history of collaboration.

Collective Impact Resource kit reviewed by Tamarack Institute can be found [here](#). This has been tailored to Aotearoa and termed Collective Action with Communities - it acknowledges the importance of Iwi/Maori Partnership and uses language that we hope resonates in terms of Te Tiriti o Waitangi.

Localities Readiness Matrix is a resource that supports a self assessment for locality partners to gauge just how ready they are - each locality will be unique based on the needs of whānau/community.

Webinars

We regularly run webinars on a range of topics centred around primary and community care, the Health Care Home model, Digital Health and Localities. Webinars recently attended include:

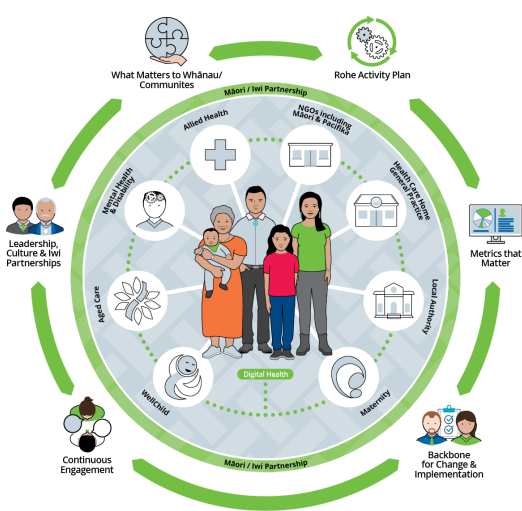
- [Tackling & Avoiding Burnout](#)
- [Bias in Healthcare](#)
- [Digital Health at Scale & Pace](#)
- [Telehealth Learning's and Experiences](#)

Join [our mailing list](#) and sign up for our next webinars

What is Collective Impact?

Collective Impact is a disciplined form of multi-sector collaboration that is proven as an effective framework for high-impact community change with an emphasis on advancing systems and policy change. Collective Action with Communities focuses on the core conditions including:

- Leadership, Culture and Iwi/Māori Partnerships
- What Matters to Whānau/Community (community aspirations)
- Rohe Plan, (High leverage activities)
- Metrics that matter, (shared learning)
- Backbone (containers for change)
- Continuous engagement



HCH & Omicron Support

At the request of our Leads Network and to support practices with the pressure of the Omicron surge, we recently produced a paper and checklist that referenced a wide range of tools and techniques that are able to support general practice in the management of omicron.

Simple tools like a morning huddle provide the ability for staff wellbeing checks and to discuss pertinent issues and patients that are in need of care or additional attention.

These tools have been proven to ease the pressure on practice workflow. Implementation support is available.

To request a copy please email admin@collab.org.nz

A Kōrero with Tamarack

Collaborative Aotearoa have been working with Tamarack to produce the following short videos. If you were to choose only one to watch, then we suggest "Mind shifts needed for Collective Impact."

Being a Field Catalyst (18:53)
<https://youtu.be/71RhOysfg3w>

What is Collective Impact (14:40)
<https://youtu.be/tfndMh780Ck>

Mind shifts needed for Collective Impact (9:59)
<https://youtu.be/lhYB14KbtRw>

Events



Something exciting is coming. Sign up for updates [here](#)

New Websites

Did you know that we now have refreshed our website? With so much information to share we have separated content to match our workstreams. Visit us at
www.collab.org.nz
www.healthcarehome.org.nz
www.localities.org.nz
www.collabdigitalhealth.org.nz

HCH Certification

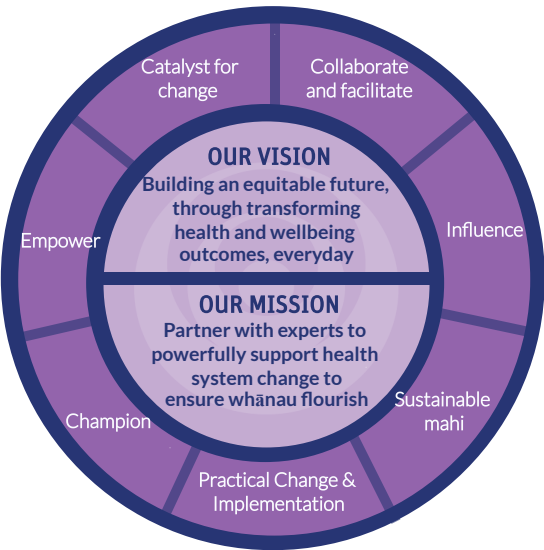
December saw our largest number of practices achieve recertification. A whopping 15 practices presented with 12 achieving recertification. An outstanding result. Certification (& recertification) supports practices to demonstrate continuous improvement across the four Health Care Home domains.

Who is Collaborative Aotearoa?

Formally known as the National Health Care Home Collaborative, the Governance Board approved the move to Collaborative Aotearoa in late 2021. This move reflects support for the broader work programmes in addition to the the Health Care Home Model, these include Digital Health and Localities mahi.

We remain the same team, with the same work ethic - offering collaborative learning platforms to share tools, resources and expertise across our network

We invite you to connect with us to learn more about our mahi as we navigate our new future in a time of health reforms.



Manaakitanga | Whakapono | Kaitiakitanga
Poipoia | Pūkengatanga | Oritetanga

